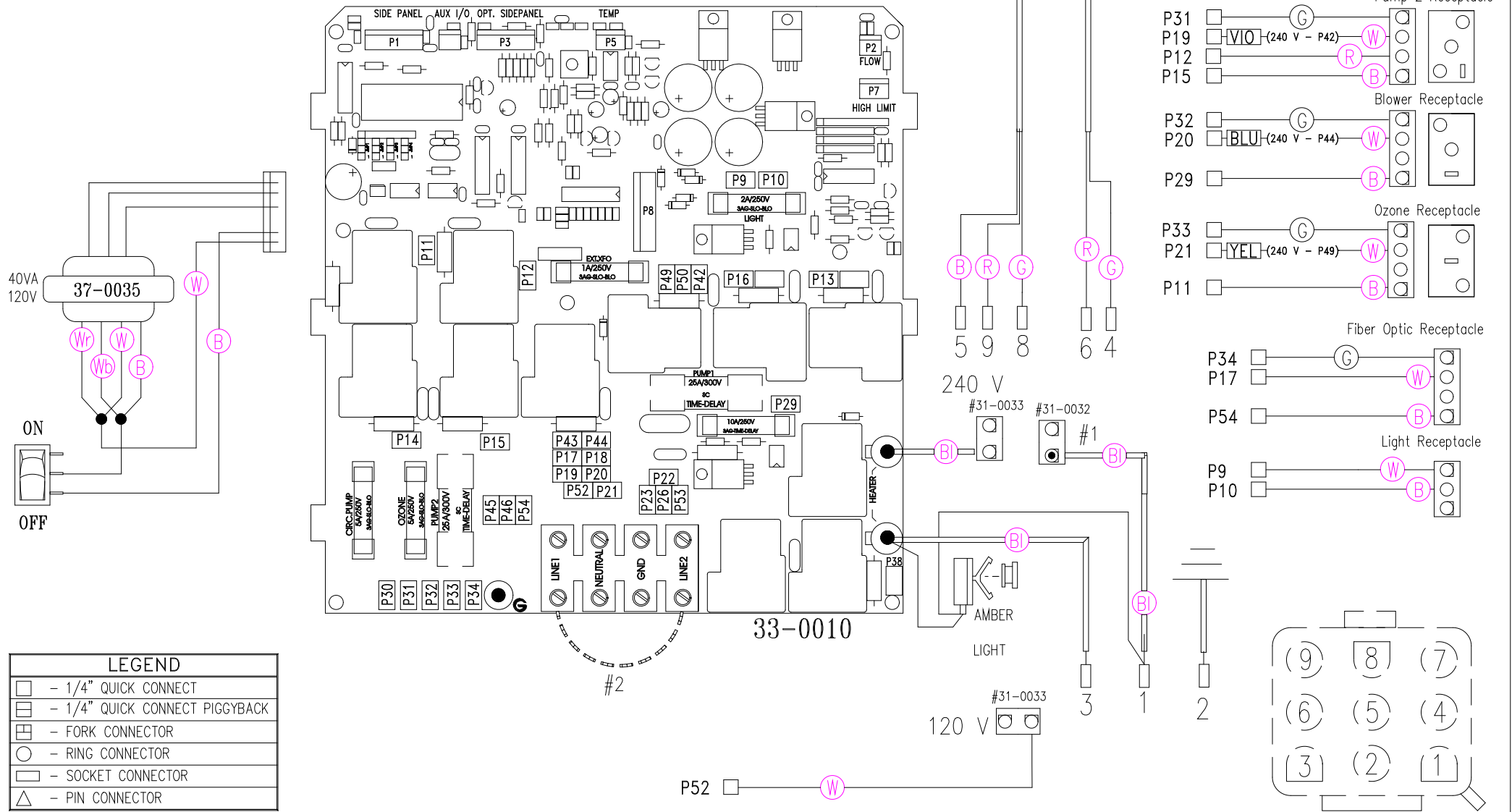


33-0010-R5



LEGEND	
	- 1/4" QUICK CONNECT
	- 1/4" QUICK CONNECT PIGGYBACK
	- FORK CONNECTOR
	- RING CONNECTOR
	- SOCKET CONNECTOR
	- PIN CONNECTOR

HYDRO-QUIP
CORONA, CA (909) 273-7575

Manufacture Notes: [XXX] Denotes the color of heat shrink used.

Approved By:

Dwg. No.
C556A0-DKPQY8-S5

Drawn
CDV

Rev
7

Wire Color Code

- #1 For 240V operation of the heater, plug must be installed into 240V receptacle. For 120V operation of the heater, plug must be installed into 120V receptacle.
- #2 Line 1 and 2 need to be SEPARATED for 240V operation. Line 1 and 2 need to be CONNECTED for 240V operation.

Date
6.5.01
Diagram No.
6401

B - Black	G - Green
Br - Brown	Bl - Blue
R - Red	V - Violet
O - Orange	W - White
Y - Yellow	Gr - Gray